

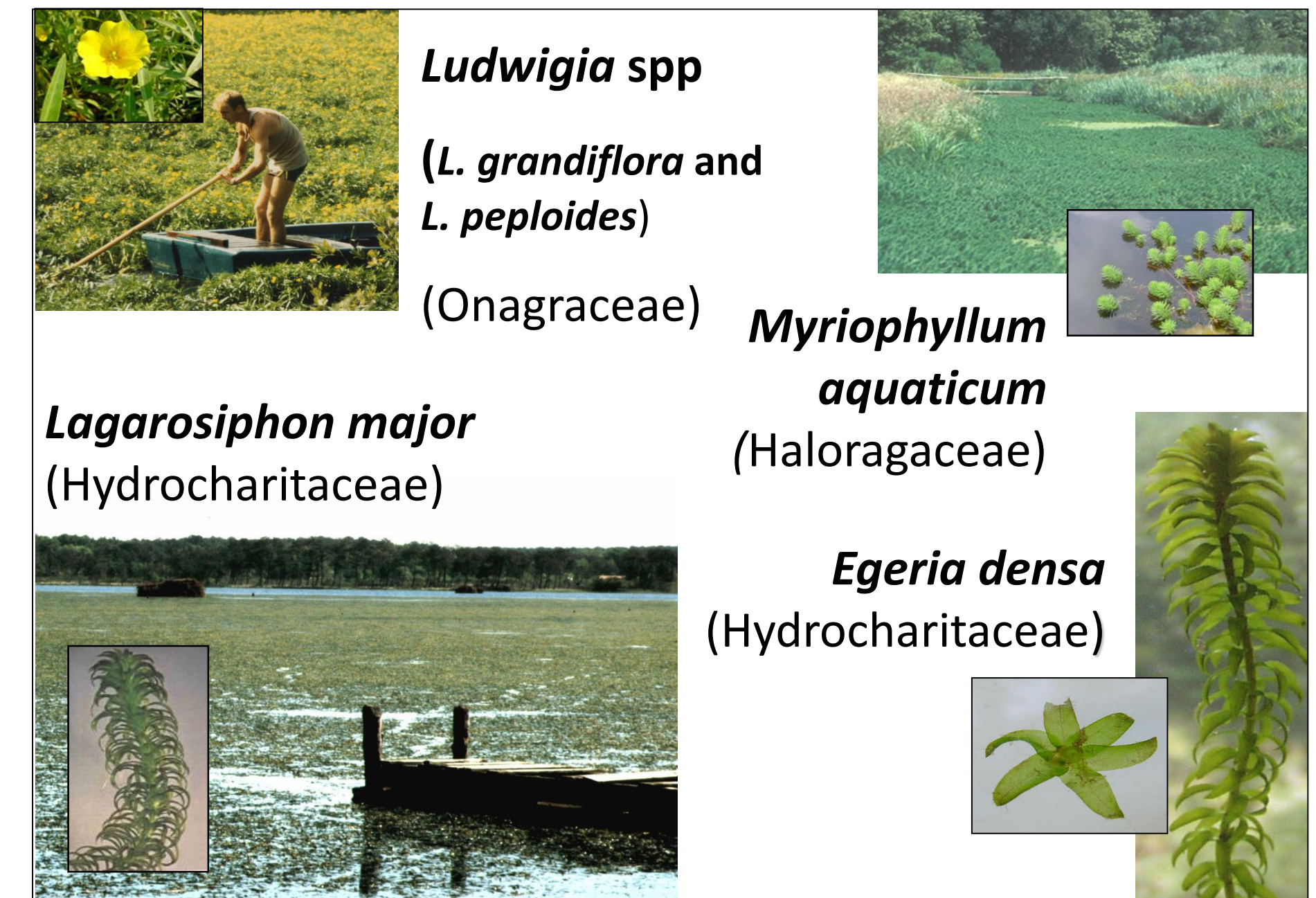
Invasive plant management coordination in France : roles of territorial working groups

Alain Dutartre ¹, Roland Matrat ², Stéphanie Hudin ³, Isabelle Laroche ⁴, Emmanuelle Sarat ⁵

Fifty years of biological invasions in water bodies ?

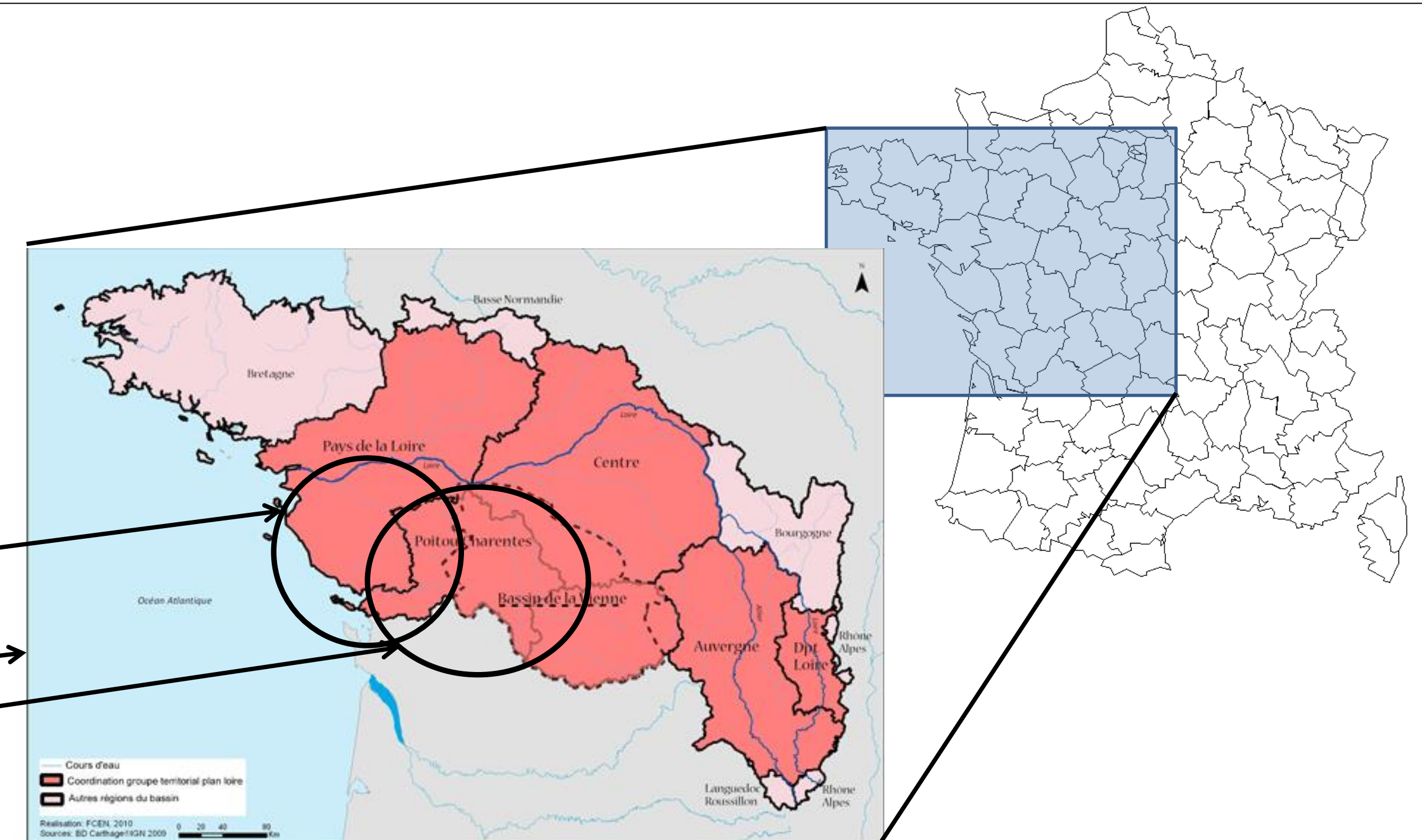
- First invasive plant management difficulties in France: 70s,
- Plant colonization in the South-West, the Atlantic seafront to Brittany, the South-East and now a large part of the country (except mountains),
- Submersed and amphibious species...
- In the 80s limited interventions in several colonized sites, often unsuccessful,
- numerous requests from local managers,
- A necessity to help managers to improve their management, to coordinate intervention methods and stakeholders, to optimize expenditures and to analyze the colonization dynamics of these various species.

Main invasive alien aquatic plants



Territorial working groups for the management of invasive alien aquatic plants: responses to requests from local managers

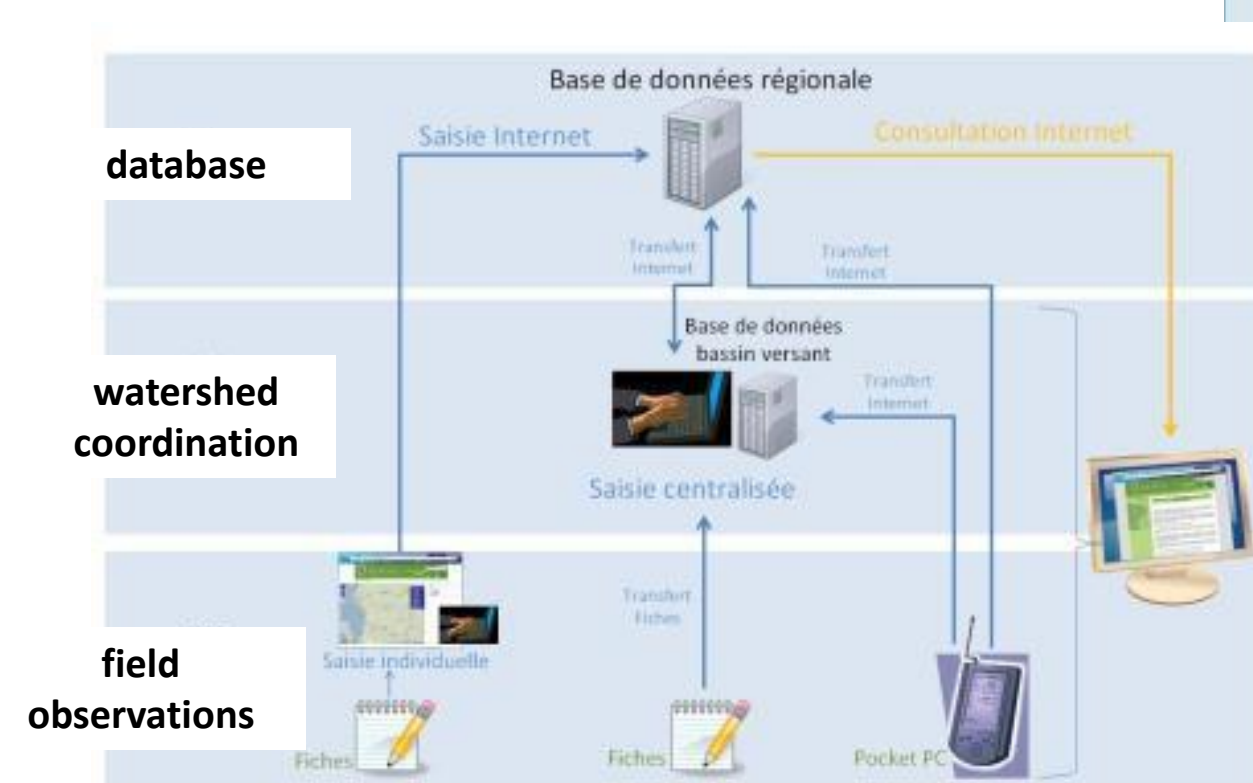
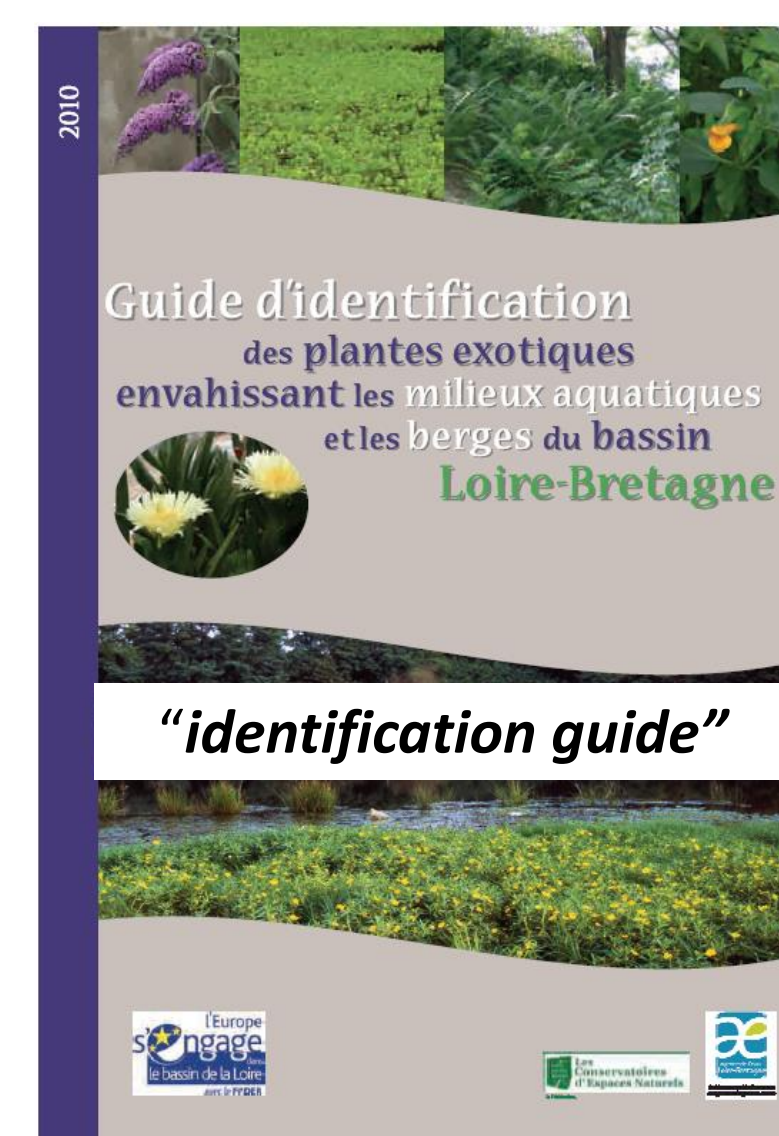
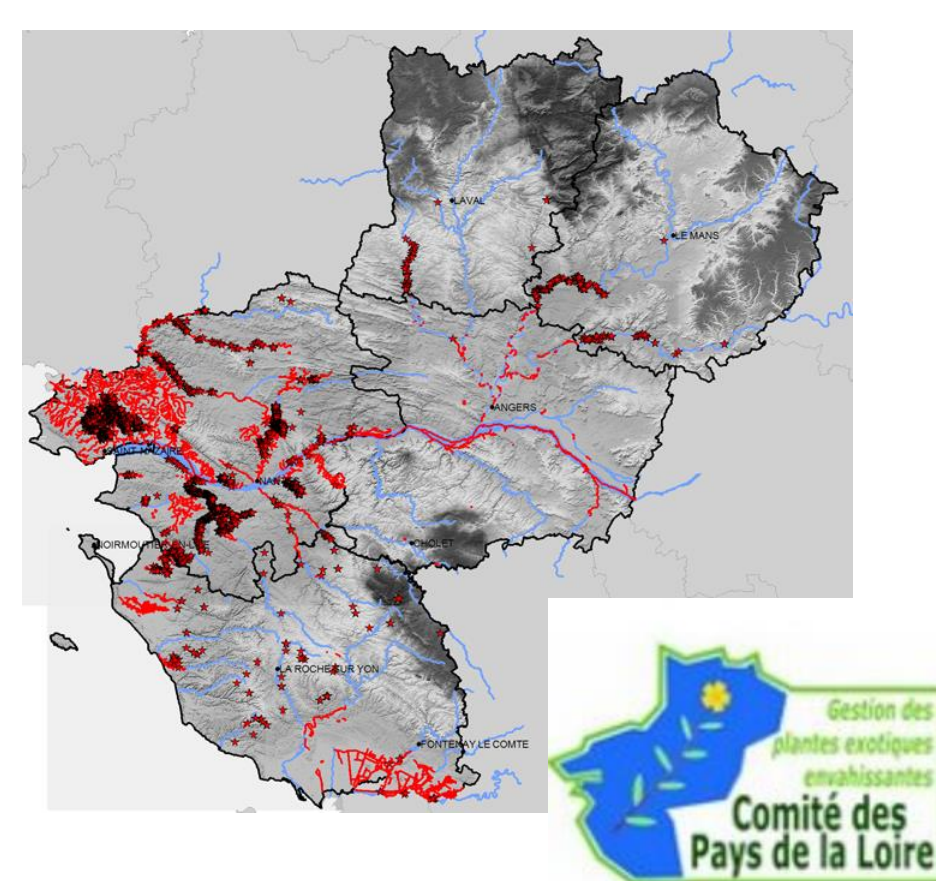
- In the early 2000s, the first working groups allowing this coordination emerged,
- **A working group is:** an effective coordinator, several regular participants and production of information for managers and stakeholders!
- Covering various administrative territories, for example:
 - the Pays de la Loire Committee for the management of invasive alien plants (since 2001),
 - the area of the Loire-Bretagne Water Agency (since 2002),
 - the Poitou-Charentes region (ORENVA) (since 2008),
 - etc.



Productions of these working groups:

- Annual distribution maps,
- Species list,
- Specification and data sheets:
 - field observations,
 - intervention characteristics,
- Management guide,
- Identification guide,
- Information leaflets,
- Exhibition panels,
- Conferences,
- Internet websites.

“Pays de la Loire: water primrose map (2010-2012)”



1 compilation of field data: distribution maps, analysis of species dynamics, intervention assessment

Roles and interests of these working groups:

- Wide collection of information on distribution, ecology and dynamics of alien invasive aquatic plants,
- Broad improvement of standardization of field records, modalities and coordination of management interventions,
- Assistance to the creation of other groups,
- Work extension to invasive alien fauna,
- Great contribution to the creation of an efficient network management of invasive species in France for the implementation of the European regulation.

¹ Independant consultant - **Bordeaux**
adutartre.consultant@free.fr

² DREAL Pays de la Loire – **Nantes**
roland.matrat@developpement-durable.gouv.fr

³ FCEN – **Orléans**
stephanie.hudin@reseau-cen.org

⁴ ORENVA - **Région Poitou - Charentes - Poitiers**
i.laroche@cr-poitou-charentes.fr

⁵ UICN France – **Paris**
emmanuelle.sarat@uicn.fr